

DRC  
PZ22-12009-2023  
03/01/2023

NO.	DATE	REMARKS	BY

© COPYRIGHT 2023 BY  
ENGENUITY GROUP, INC.  
THIS  
DRAWING IS PROVIDED FOR  
INFORMATIONAL PURPOSES ONLY.  
UNLESS SIGNED AND SEALED BY  
THE PROFESSIONAL ENGINEER  
REPRESENTING  
ENGENUITY GROUP, INC.

Digitally  
signed by  
Adam Swaney  
Date:  
2023.01.03  
11:03:17  
05'00"

MARTIN BROWER INDUSTRIAL  
1661 NW 12TH AVENUE  
POMPANO BEACH, FLORIDA  
DETAILS

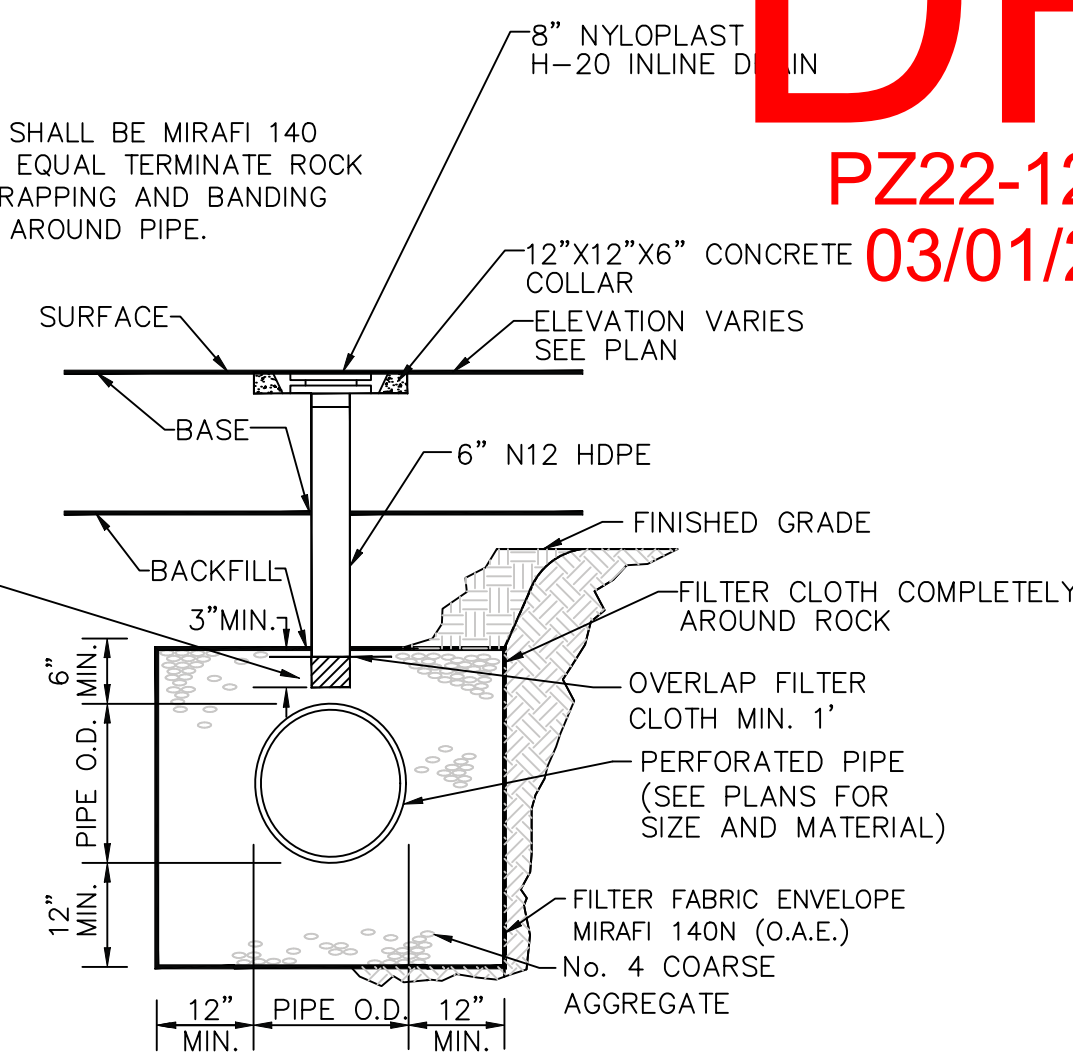
A Higher Standard of Excellence  
**engenuity** group inc.  
ENGINEERS • SURVEYORS • GIS ANALYSTS  
1280 N CONGRESS AVE., SUITE 101  
WEST PALM BEACH, FLORIDA 33409  
PH (561) 655-1151 • FAX (561) 832-5390  
WWW.ENGENUITYGROUP.COM CERTIFICATE OF AUTHORIZATION #7095

DATE	DRAWN	PROJECT	ENGINEER	PROJECT	CHECKED
JANUARY 2023	RB	ACS	RB	RB	ACS
7	11	JOB NO.	20049.01		

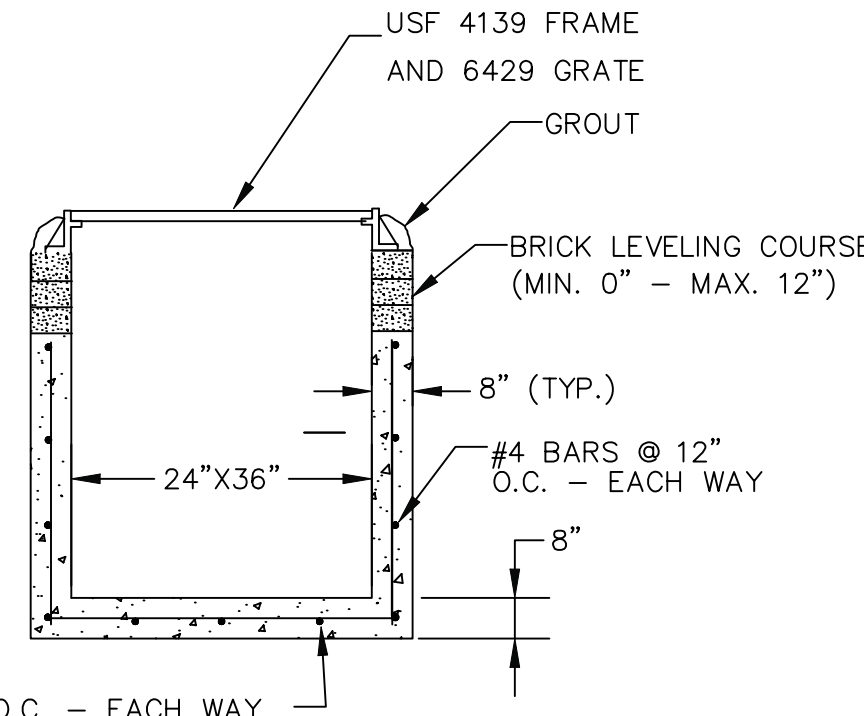


Know what's below.  
Call before you dig.

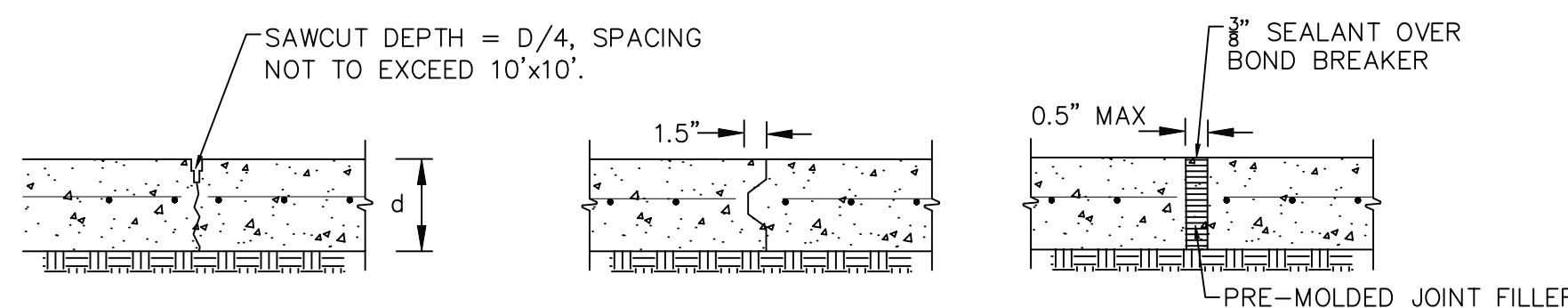
NOTES:  
FILTER CLOTH SHALL BE MIRAFI 140  
OR APPROVED EQUAL TERMINATE ROCK  
TRENCH BY WRAPPING AND BANDING  
FILTER CLOTH AROUND PIPE.



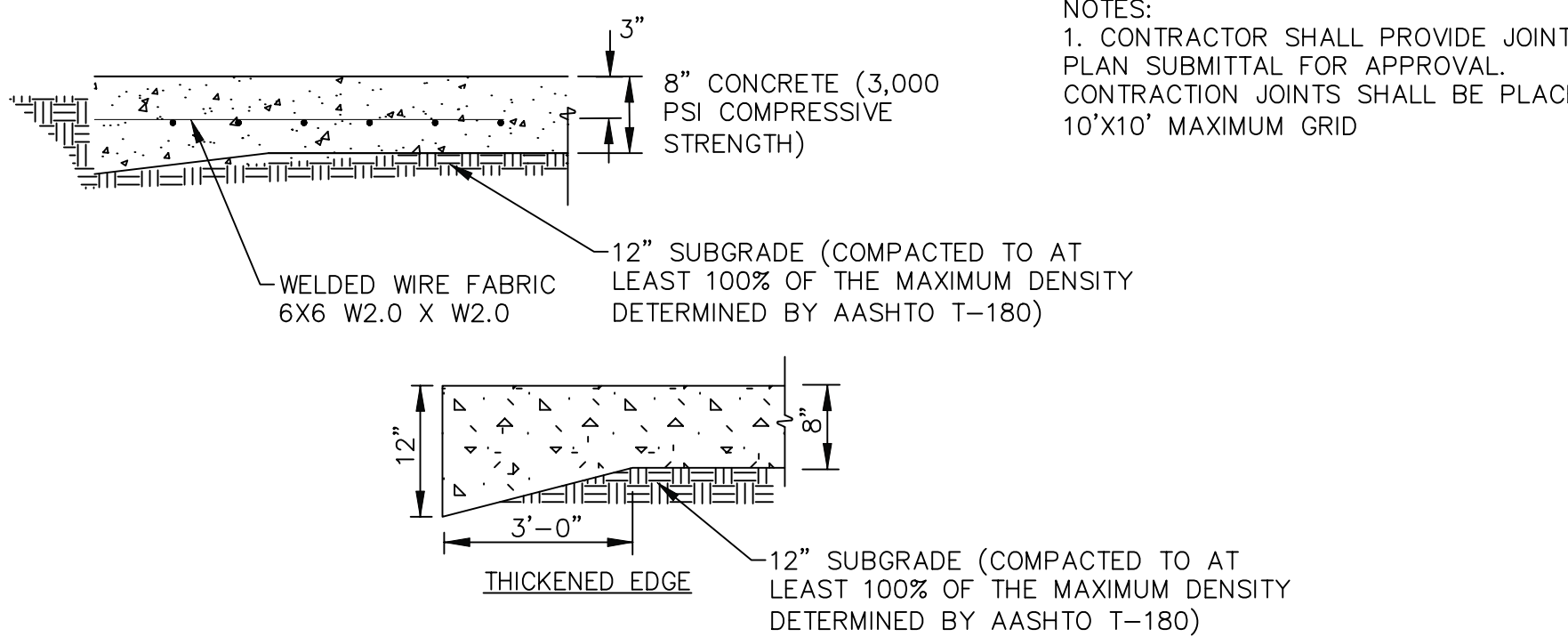
EXFILTRATION TRENCH VENT



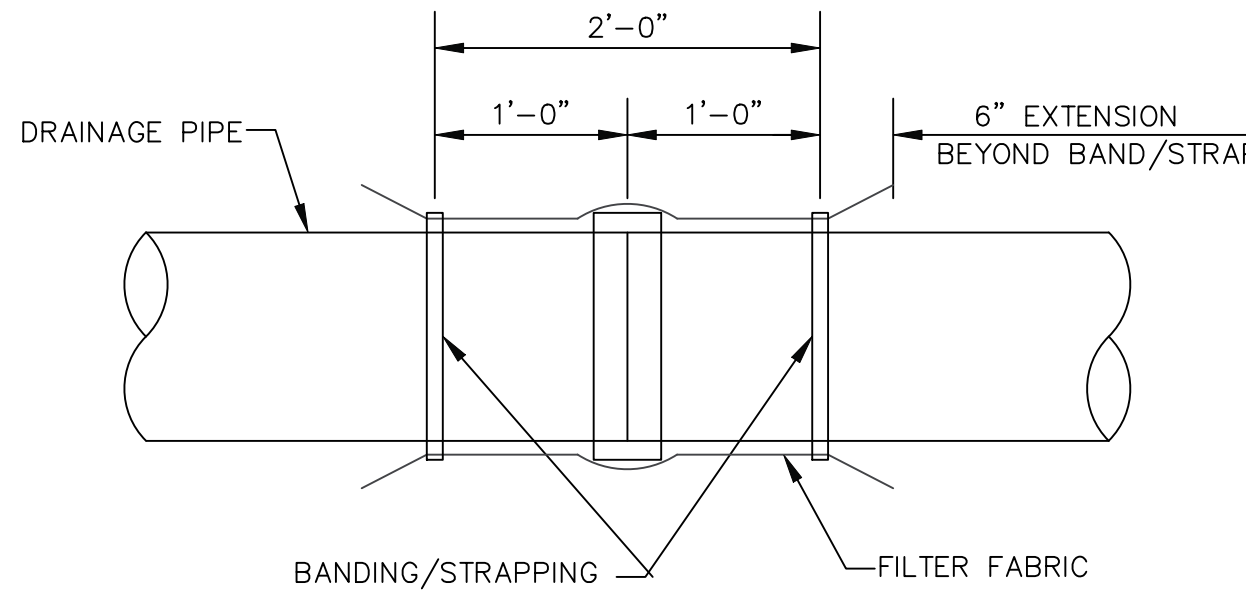
DRAINAGE INLET - TYPE C1



CONTRACTION JOINT  
CONSTRUCTION JOINT  
EXPANSION/ISOLATION JOINT

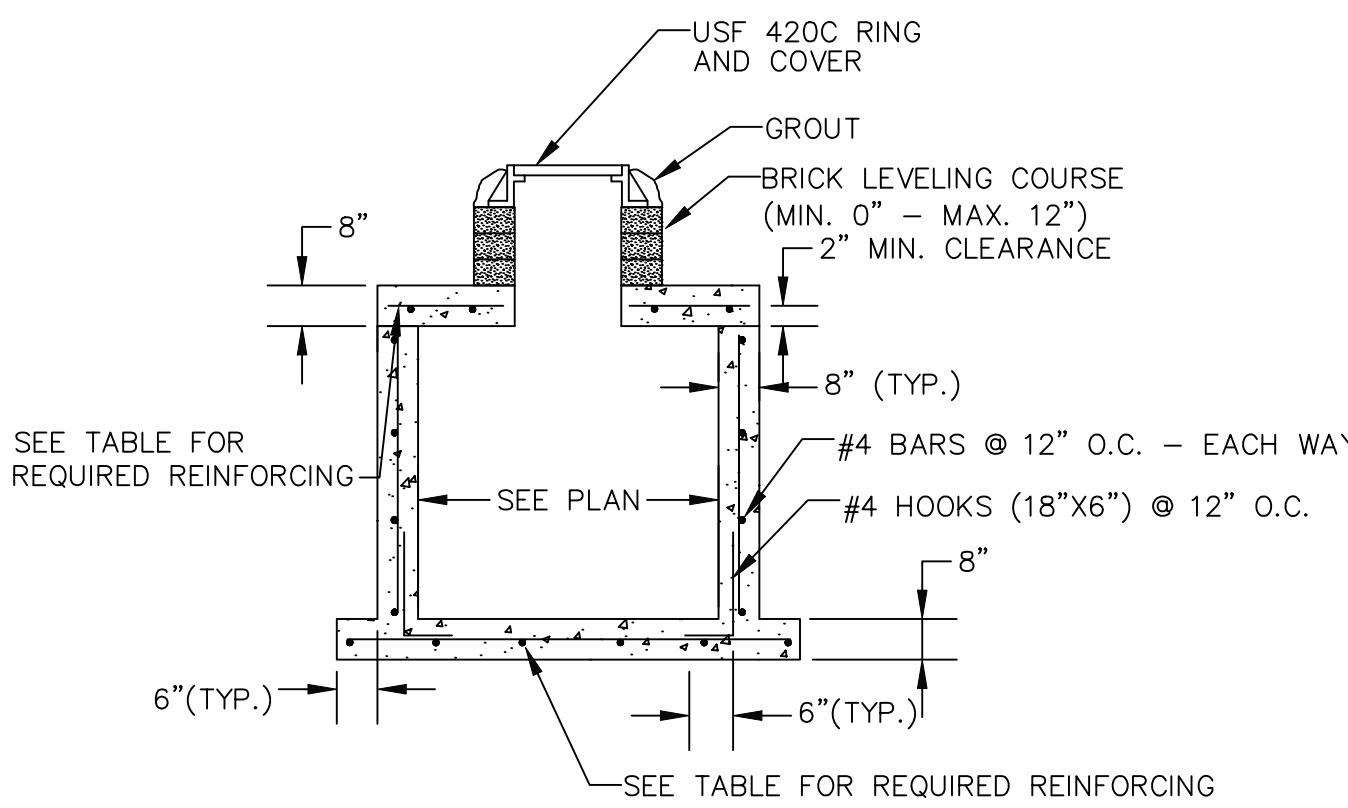


8\"/>

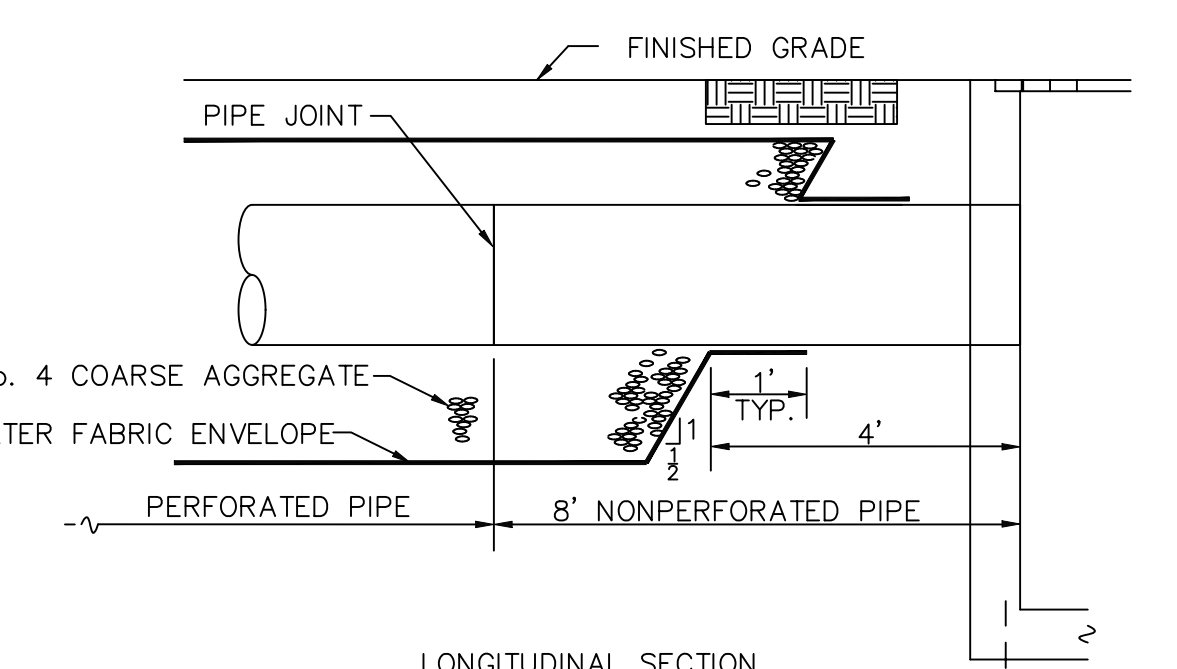


FILTER FABRIC JOINT WRAP

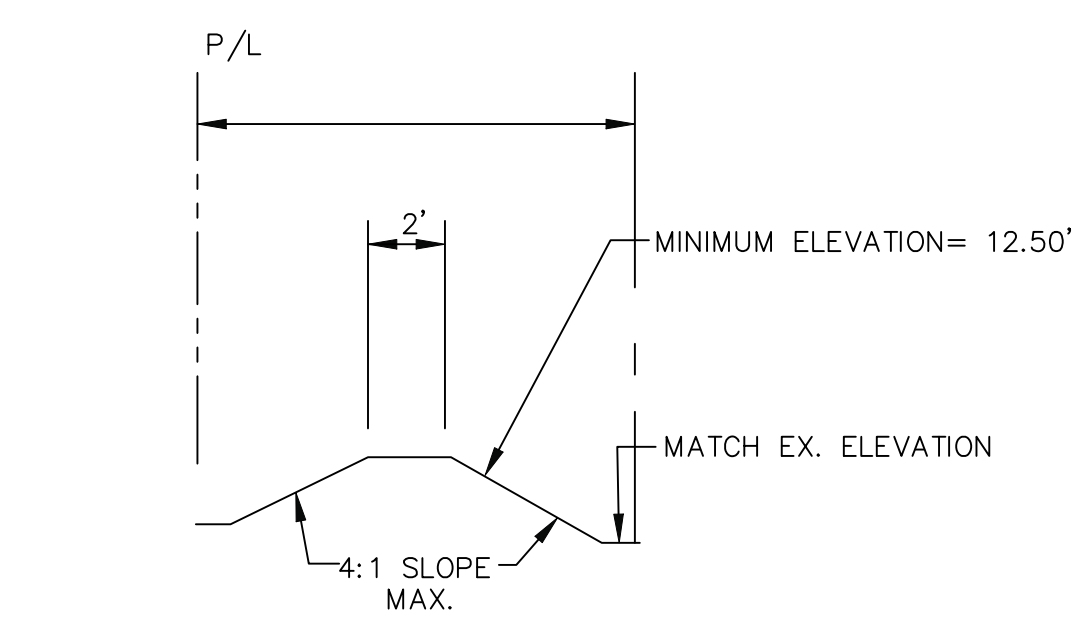
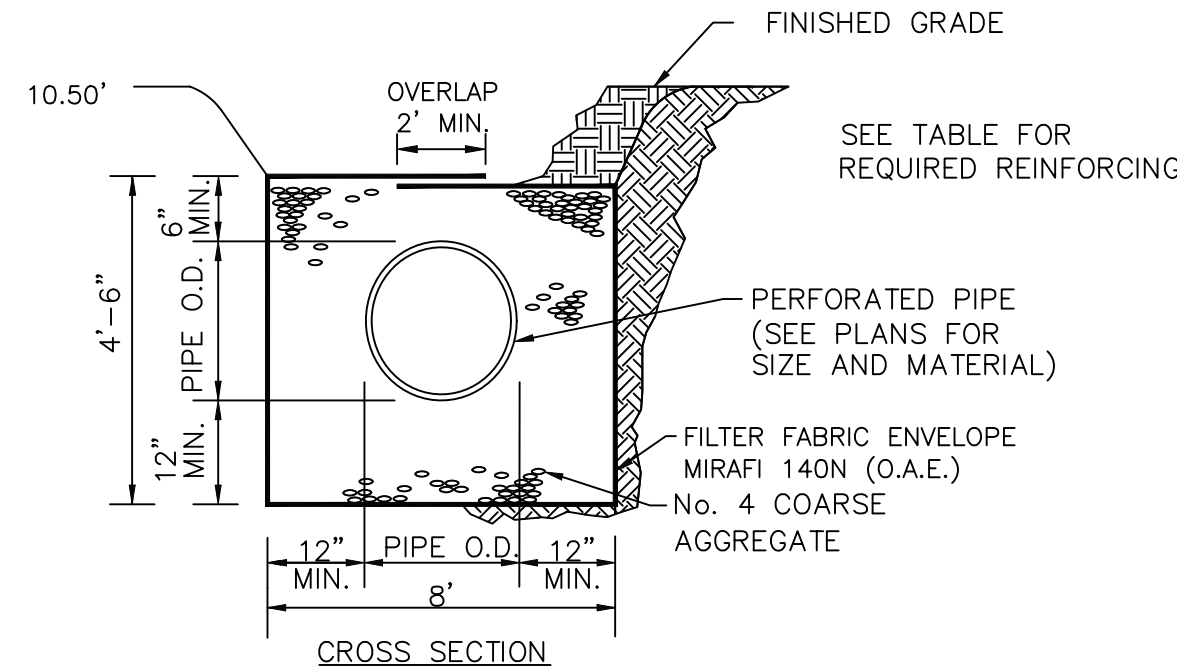
STRUCTURE SIZE	STEEL REINFORCING REQUIRED
4' DIAM.	#4 BARS @ 12" O.C. - EW
5' DIAM.	#4 BARS @ 10" O.C. - EW
6' DIAM.	#5 BARS @ 10" O.C. - EW
7' DIAM.	#6 BARS @ 10" O.C. - EW
8' DIAM.	#6 BARS @ 7" O.C. - EW



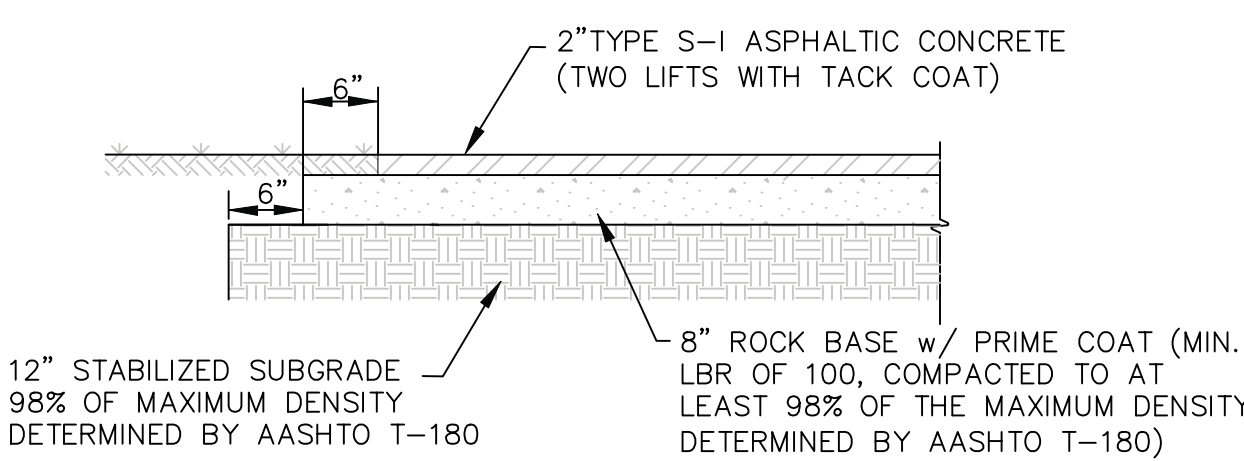
DRAINAGE MANHOLE



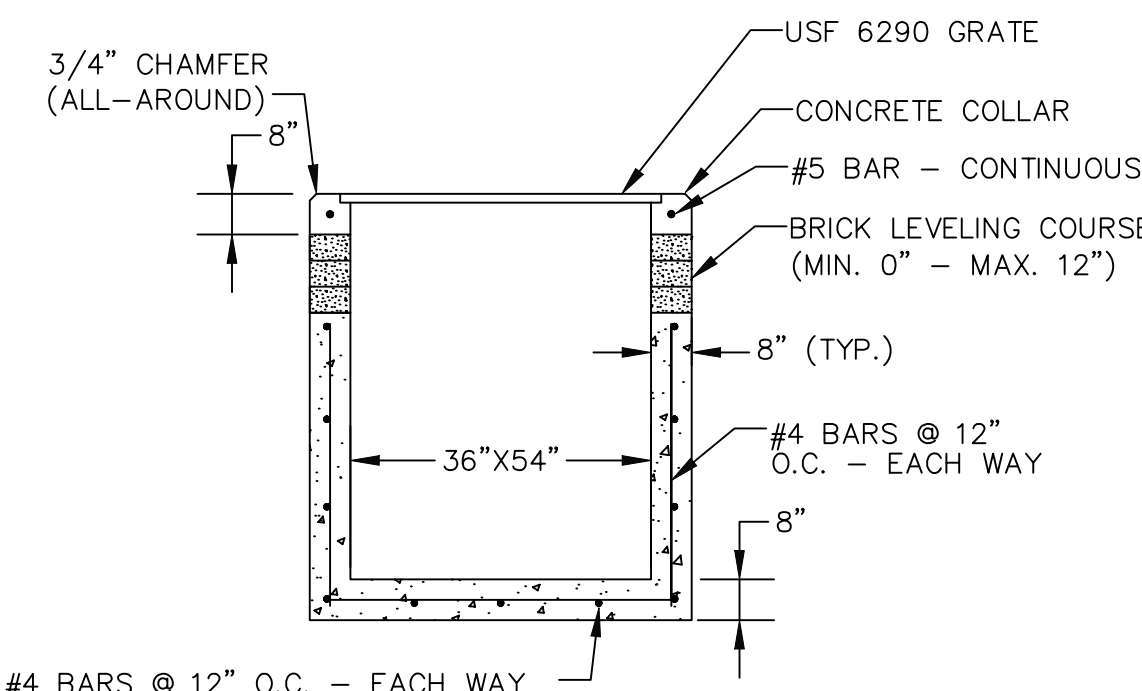
EXFILTRATION TRENCH



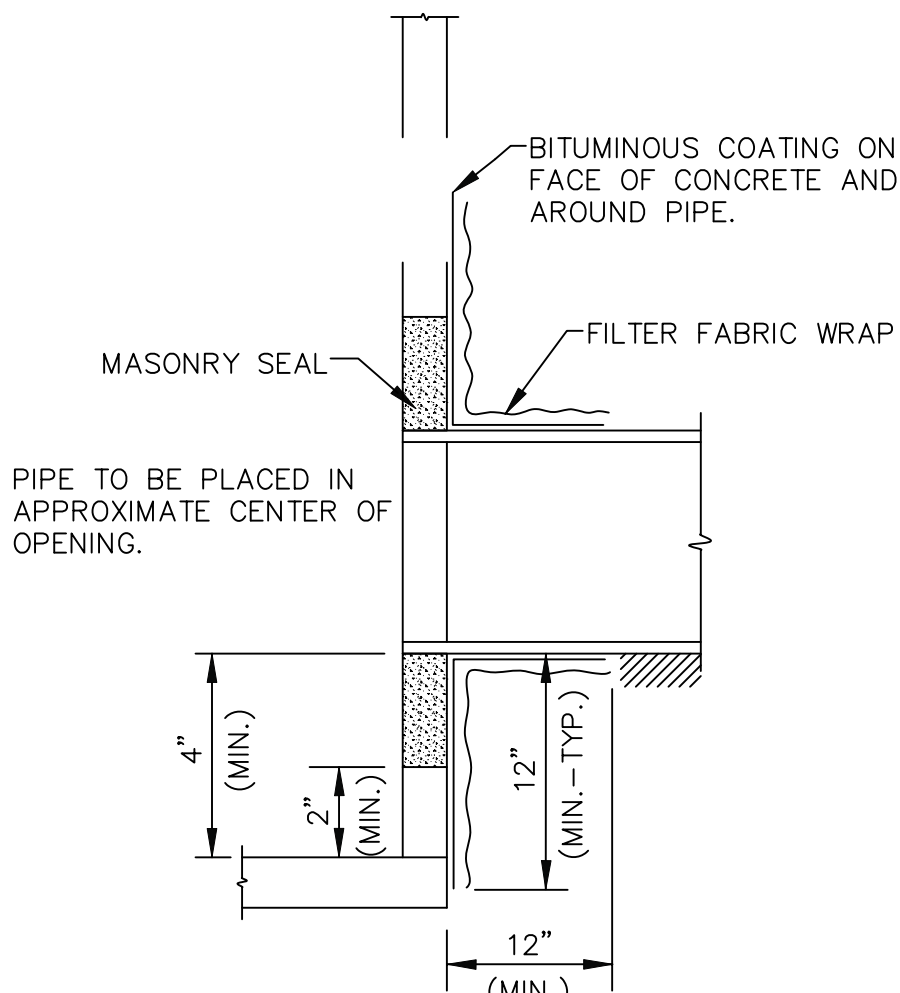
PERIMETER BERM DETAIL



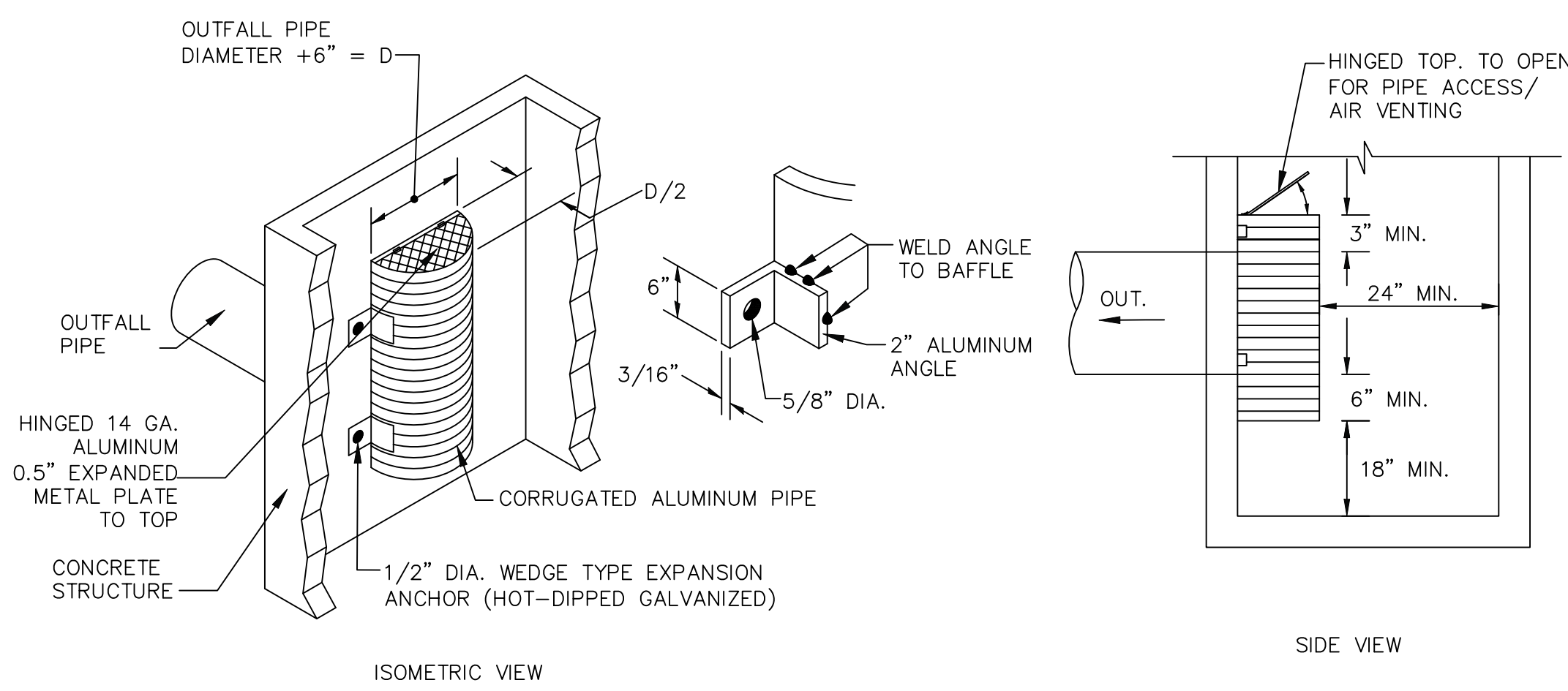
ASPHALT PAVEMENT SECTION



DRAINAGE INLET - TYPE E



FILTER FABRIC WRAP ON GROUTED  
PIPE TO STRUCTURE JOINT



POLLUTION CONTROL BAFFLE

TOP OF BAFFLE SHALL BE 12 INCHES BELOW  
TOP OF STRUCTURE. BOTTOM OF BAFFLE SHALL  
BE 18 INCHES ABOVE BOTTOM OF STRUCTURE.  
BOTTOM OF BAFFLE SHALL BE 6 INCHES BELOW  
OUTFALL PIPE INVERT.

95%  
SUBMITTAL

ADAM SWANEY, P.E., PROFESSIONAL ENGINEER LICENSE NO. 72235.  
THIS DOCUMENT HAS BEEN ELECTRONICALLY SIGNED AND  
SEALED BY ADAM SWANEY, P.E. USING A SHA-1 AUTHENTICATION CODE.  
PRINTED COPIES OF THIS DOCUMENT ARE NOT CONSIDERED SIGNED AND  
SEALED AND THE SHA-1 AUTHENTICATION CODE MUST BE VERIFIED ON ANY  
E L E C T R O N I C C O P I E S .